

## **Screening of Restorable WA-CMS Rice Genotypes for Bacterial Blight (BB) Resistance**

**Surabhi Sinha<sup>1</sup>, Sweta Sinha<sup>2</sup>, Mankesh Kumar<sup>1</sup>, Suresh Prasad Singh<sup>1</sup>,  
Anand Kumar<sup>1</sup>, Amarendra Kumar<sup>3</sup> and Satyendra<sup>1\*</sup>**

<sup>1</sup>Department of Plant Breeding and Genetics, Bihar Agricultural College, Bihar Agricultural University,  
Sabour, Bhagalpur- 813210, India.

<sup>2</sup>Department of Molecular Breeding and Genetics Engineering, Bihar Agricultural College, Bihar  
Agricultural University, Sabour, Bhagalpur- 813210, India.

<sup>3</sup>Department of Plant Pathology, Bihar Agricultural College, Bihar Agricultural University, Sabour,  
Bhagalpur- 813210, India.

### **Authors' contributions**

*This work was carried out in collaboration among all authors. Authors SS and Satyendra designed the study, performed the statistical analysis, wrote the protocol and wrote the first draft of the manuscript.*

*Authors MK, SPS and AK managed the analyses of the study and managed the literature searches.*

*Authors SS and AK helped and supported in lab work. All authors read and approved the final manuscript.*

### **Article Information**

DOI: 10.9734/CJAST/2020/v39i1230662

Editor(s):

(1) Dr. Prachi Srivastava, Amity Institute of Biotechnology, Amity University, India.

Reviewers:

(1) Maria Bintang, IPB University (Bogor Agricultural University), Indonesia.

(2) Priscilla Boateng, CSIR-Crops Research Institute, Ghana.

Complete Peer review History: <http://www.sdiarticle4.com/review-history/56535>

**Original Research Article**

**Received 27 February 2020**

**Accepted 04 May 2020**

**Published 31 May 2020**

### **ABSTRACT**

**Aim:** To screen and evaluate rice genotypes which were found to be having restorability for WA-CMS cytoplasm for their further use in the hybrid breeding program.

**Study Design:** Laboratory-experimental design was used in the study.

**Place and Duration of the Study:** The genotypes used in the study were comprised of promising lines from various experiments, local varieties and landraces, etc. The study was conducted during June 2017 to May 2018.

**Methodology:** In the present study, 55 rice lines which were found to have restorable capacity for WA-CMS system were screened for 4 Bacterial Blight resistance genes viz. *Xa4*, *xa5*, *xa13*, *Xa21*,

against most prevalent races of the pathogen throughout the country, using PCR based molecular markers namely, MP1+MP2, xa5 multiplex, xa13 prom and pTA248, respectively.

**Results:** Bacterial Blight (BB) is considered to be one of the most important diseases of the rice crop. As hybrids are one of the most viable options to increase rice yields, the parental material used for the development of hybrids, must be having genes which show resistance against BB. Out of 55 restorer lines, 43 genotypes amplified for *Xa4*, 7 genotypes namely R. Bhagwati, IRBB5-9, Narendra Usar Dhan 3, Pratikhya, IR 88964-24-2-1-4, IR 94314-20-2-1B, HHZ 5-DT8-DT1-Y1 showed positive bands for *xa5*, 3 genotypes namely PAU 3220, N. Usar Dhan 3 and Pratikhya showed positive bands for *xa13*. However, only one genotype namely Pratikhya amplified for *Xa21*. In combinations, Narendra Usar Dhan 3 amplified for *xa5* and *xa13*. Pratikhya was the only genotype found to have all 4 BB (*Xa4*, *xa5*, *xa13*, *Xa21*) resistance genes under consideration.

**Conclusion:** Genotypes having different BB resistant genes in combinations along with good capability of restoration for prevalent WA-CMS system can further be used as male parent in the hybrid breeding programme for development of BB resistant hybrids.

*Keywords: Bacterial blight; hybrid rice; restorer lines; screening.*

## 1. INTRODUCTION

Rice (*Oryza sativa* L.) is the staple food of more than two third of the world population providing approximately 50% of the dietary calorific requirements. Approximately 92% of rice is grown and consumed in Asia, which comprises 55% of the world population [1]. As per estimation, 135 million tonnes of milled rice will be required in India till 2030 which will be increased to 180 million tonnes by 2050 (anonymous). To keep pace with the ever increasing population, there is a need to boost rice production. Among several strategies suggested for increment in the rice production, development of hybrids is one of the most viable and proven technology. Hybrids are feasible and readily adaptable. Success of hybrid rice technology in China has resulted in tremendous enhancement of rice production in the country. In India also very good hybrids have been developed and released from both public and private sectors. Earlier issues related to grain quality have now been resolved and hybrids with very good grain qualities are coming into farming practices [2].

Plant breeders face several problems in developing new varieties. On one side, we are gradually getting higher productions while on the other side, more and more challenges are coming. Few decades ago, there were only few insects pests and diseases which were said to be important in respect of the breeding purposes of rice, but now this number has reached new heights [3] and it has become a necessity that the hybrids which is now being developed, must have resistance against insect pest and diseases prevailing in the region. In Coordinated Research

Improvement Project (AICRP), it is mandatory to test the genotypes for disease and insect pests if the genotypes become advanced in the first year of testing. Therefore, development of rice hybrids resistant to different biotic and abiotic stresses will be effective. In the present time, plant breeders have been equipped with several modern tools and techniques which have made selection and handling of single gene or a group of genes quite simple.

Bacterial blight (BB) or bacterial leaf blight (BLB) caused by *Xanthomonas oryzae oryzae* (*Xoo*) is the most destructive disease of rice prevalent mostly in irrigated and rainfed lowland rice growing areas. It affects the rice plant at all stages of growth but maximum damage occurs at tillering stage. In the initial stages, small lesions on leaf tips are observed. But, as the disease progresses, small lesions turn into wavy lesions and cover almost entire leaf portions and thus, affecting the yield to a greater extent. Yield losses in severely infected fields range from 20 to 30%, but this can reach as high as 80% [4,5,6,7]. Employment of host plant resistance has been found to be very reliable in controlling the disease. Till date, 40 BB resistance genes [1] conferring resistance to host against different strains of *Xoo* have been identified, of which, *Xa2*, *Xa4*, *Xa7*, *Xa30*, *Xa33* and *Xa38* have been physically mapped and *Xa1*, *xa5*, *xa13*, *Xa21*, *Xa26/Xa3* and *Xa27* have been cloned [4,6]. On the basis of studies done on segregating pattern of these 40 BB resistance genes, 14 genes viz. *Xa1*, *Xa2*, *Xa3*, *Xa4*, *Xa7*, *Xa10*, *Xa11*, *Xa12*, *Xa14*, *Xa16*, *Xa17*, *Xa18*, *Xa21* and *Xa22* were found to be dominant while six genes viz. *xa5*, *xa8*, *xa13*, *xa15*, *xa19* and *xa20* were found to recessive in nature

[8,9]. However, out of these, four genes viz. *Xa4*, *xa5*, *xa13*, *Xa21* were reported to be the most important conferring effective resistance against most prevalent races of the pathogen [10,4,11].

In India, most of the rice hybrids are based on CGMS (Cytoplasmic Genetic Male Sterility) system where three lines namely A-male sterile line, B-maintainer line and R-restorer line are required. During the course of hybrid development, if restorer line having one or more genes conferring resistance against BB is used, the resistance can easily be transferred to the hybrids.

Using conventional breeding tools for screening of resistance is a very time taking and tedious task. Moreover, the accuracy is largely affected by the environments and technical operations. Now, several gene specific and SSR (Simple Sequence Repeats) markers are available for the screening which can be used in Marker Assisted Selection (MAS) of the disease resistance in screening process of progenies. In the present study, genotypes which were found to have restorability for WA-CMS (Wild Abortive-Cytoplasmic Male Sterility) were used for screening for 4 most prevalent BB resistance genes viz. *Xa4*, *xa5*, *xa13*, *Xa21* so that the lines could be further used for the development of better hybrids.

## 2. MATERIALS AND METHODS

### 2.1 Plant Material and Molecular Markers

A set of 55 rice genotypes (Table 1) consisting of indigenous and exotic collections and reported to have restorability for WA-CMS system, were used for screening of 4 BB resistance genes viz. *Xa4*, *xa5*, *xa13*, *Xa21* by using different tightly linked gene specific/ PCR-based markers (Table 2).

### 2.2 DNA Extraction

Genomic DNA was extracted using rapid DNA isolation protocol, reported by Kumar et al. [12]. About 50 mg leaf tissue of 21 days old rice seedlings was cut into small pieces, homogenized and digested using 500 µl of isolated buffer [100 mM Tris-HCl (pH 8.0), 50 mM EDTA, 500 mM NaCl, 1% SDS (w/v) and 0.1 (v/v) of β-mercaptoethanol]. Then 96 µl of 5M potassium acetate were added and the samples were vortexed following centrifugation @ 10000 rpm for one minute. The supernatant was

collected and the DNA was precipitated with equal volume of isopropanol. The DNA pellet was then washed in 70% ethanol followed by alcohol was decantation and air drying of DNA pellet. It was further dissolved in 60 µl of distilled water and stored at -20°C freezer.

### 2.3 Polymerase Chain Reaction (PCR)

Extracted DNA samples were subjected to PCR amplification using the tightly linked/gene specific molecular markers in automated thermal cycler (Applied Biosystems Veriti, USA). The PCR amplification were carried out in 12 µl reaction volume contained 2 µl (100 ng) DNA, 4 µl Premix Taq® Version2.0 (Xcelris genomics, India), 0.25 µl each forward and reverse primer (0.25 µM) and 5.5 µl MilliQ water. Reaction condition was programmed as initial hold at 94°C for 4 minutes followed by 35 cycles of denaturation at 94°C for 30 seconds, 60 seconds annealing at 55°C for linked/ gene specific markers and extension at 72°C for 60 seconds. Further extension was allowed at 72°C for 5 minutes followed by holding the samples at 4°C for 2 minutes. The PCR products were resolved by electrophoresis in 1.5% agarose gels for pTA248, xa5S/xa5SR/R-Multiplex and xa13 prom markers and 2.5% agarose gels for MP1+MP2 markers in 1X TAE buffer. The amplicons were visualized by UV light and documented (UVITEC gel doc system, UK).

## 3. RESULTS AND DISCUSSION

Bacterial Blight (BB) is one of the most deadly diseases of rice crop. Most of the mega old and new varieties have become susceptible to one or more races of the pathogen. In the present study, 55 rice genotypes which were having restorability capacity for WA-CMS system were screened for genes conferring resistance to major races of the pathogen. For this purpose, molecular markers viz. MP1+MP2, xa5 (Multiplex), xa13 prom and pTA248 were used, for screening of *Xa4*, *xa5*, *xa13* and *Xa21*, respectively.

The genes under study i.e. *Xa4*, *xa5*, *xa13* and *Xa21* produced specific band of 120 bp, 400 bp and 150 bp, 500 bp and 1000 bp indicating their presence while amplification of 150 bp, 400 bp and 300 bp, 250 bp, 600 bp and 800 bp bands indicated the absence of genes, respectively.

Out of 55 genotypes, *Xa4* was found to be present in 43 lines, like wise *xa5*, *xa13* and *Xa21* was found present in seven, three and one

**Table 1. List of genotypes used in the study**

S. No.	Name/ Designation	S. No.	Name/ Designation	S. No.	Name/ Designation	S. No.	Name/ Designation	S. No.	Name/ Designation
1.	RAU 1484	12.	HIRANMAYEE	23.	IR 88964-24-2-1-4	34.	HHZ 5-DT8-DT1Y1	45.	IR 07A140SBR-1
2.	PUSA SUGANDH-5	13.	IR06A196	24.	ZHONGHUA 1	35.	PAU 3220	46.	RAJENDRA KASTURI
3.	IR 8896-39-1-4-4	14.	IRK4098SBR-1E	25.	IR 88968-2-1-1-2	36.	PR 35015-5-4	47.	BPT 5204
4.	RAJENDRA BHAGWATI	15.	HUA 565	26.	PRR 78	37.	IR09N142	48.	CR 3825-2-1-2-2-3
5.	IRBB-59	16.	TRC 2013-1	27.	HHZ 9-SAL9-Y3-SUB 1	38.	RYC 674	49.	IR 05A164
6.	NARENDRA USAR DHAN -3	17.	HHZ 25-DT9-Y1-Y1	28.	HHZ 2-Y3-Y1-Y1	39.	IR 04A115	50.	IR 96321-327-300-B-1-1
7.	IRRI-123	18.	HHZ14-SAL10-DT1-DT1	29.	IR 91648-B-89-B-12-1	40.	CR 3622-7-3-1-1-1	51.	PUSA 1638-07-129-2-63
8.	HKR-08-29	19.	HHZ 14-Y7-Y1-DT2	30.	IR 94314-20-2-1-B	41.	IR 06N120	52.	IR 88963-3-7-2-4
9.	AKSHYADHAN	20.	IR 64	31.	IR87761-39-2-3-2	42.	CR 2994-5-3-2-1-1	53.	MGD-1104
10.	PRATIKHYA	21.	SABOUR ARDHJAL	32.	PAU 3207	43.	SWARNA SUB 1	54.	HHZ 17-Y16-Y3-Y1
11.	IR06A177	22.	CRR 547-20-1-1	33.	CN 1646-1-9	44.	IR 1576-1698-2-556-1	55.	R 1530-1546-1418-1-1

**Table 2. Chromosome position, primer sequence, annealing temperature of the used tightly linked/gene based molecular markers**

Sl. No.	Gene/QTL	Primers	Chr. No.	Annealing temp. (°C)	Amplicon size	References	
1.	Xa 4	MP1+MP2	11	55	150, 120	Suh et al, (2013)	
2.	xa 5	Xa5s (Multiplex)	F- ATCGATCGATCTTCACGAGG	5	55	400, 300, 150	Sundaram et al, (2011)
		Xa5s(Multiplex)	R- TGCTATAAAAGGCATTCGG				
3.	xa 13	Xa5sr/R(Multiplex)	F- GTCTGGAATTTGCTCGCGTTCCG	8	55	500, 250	Chu et al, (2006)
		Xa5sr/R(Multiplex)	R- TGGTAAAGTAGATACCTTATCAAACCTGGA				
4.	Xa 21	Xa13 Prom	F- AGCTCGCCATTCAAGTTCTTGAG	11	55	1000,800, 600	Ronald et al, (1992)
		pTA248	R- TGACTTGGTTCTCCAAGGCTT				
			F- GGCCATGGCTCAGTGTTTAT				
			R- GAGCTCCAGCTCTCCAAATG				
			F- AGACGCGGAAGGGTGGTTCCCGGA				
			R- AGACGCGGTAATCGAAGATGAAA				

genotypes, respectively {Fig. 2(a), 2(b), 2(c), 2(d)}. Ma et al. [13], Suh et al. [6], Suh et al. [14], using PCR based molecular marker MP1+MP2 and found 150 bp band size positive for *Xa4* resistance gene. Sundaram et al. [15], Pradhan et al. [11], Sinha et al. [16] also used *xa5* multiplex marker and found the similar results with 400 bp and 150 bp positive for *xa5* resistance gene. Swathi et al. [17]; Singh et al. [18], Arunakumari et al. [19], Dash et al. [20],

and Hajira et al. [21], also used *xa13* prom marker and found the similar results with 500 bp positive for *xa13* resistance gene. Bharania et al. [22], Kottapalli et al. [23], Deng et al. [24], Luo et al. [25], Xu et al. [26], Magar et al. [27], Singh et al. [18]; Swathi et al, [17]; Arunakumari et al. [19], Dash et al. [20], Pradhan et al. [28] and Sinha et al. [16] also used pTA248 marker and found the similar results with 1000 bp positive for *Xa21* resistance gene.

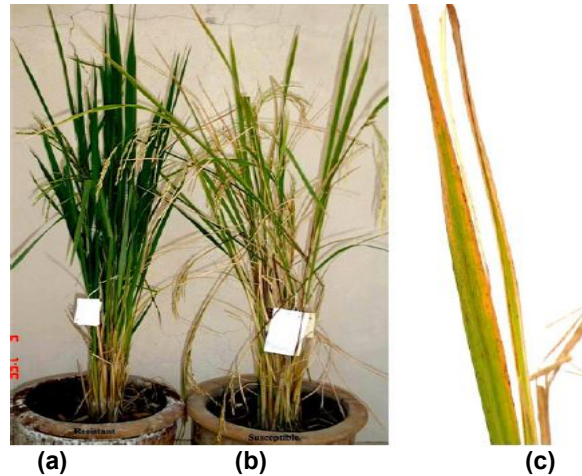
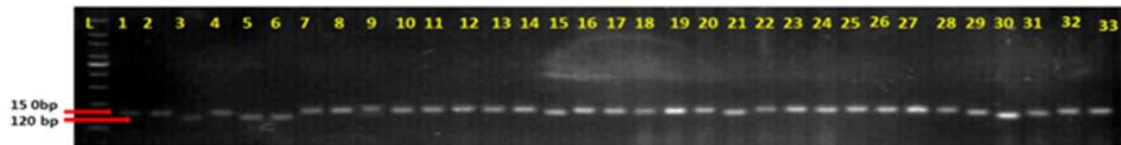
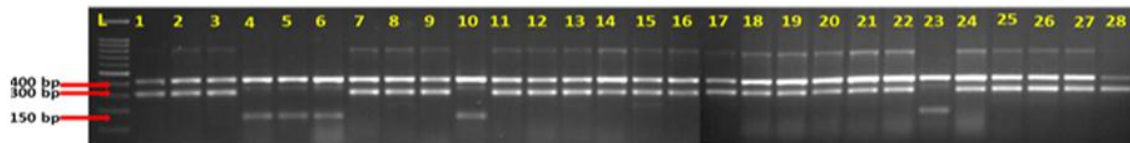


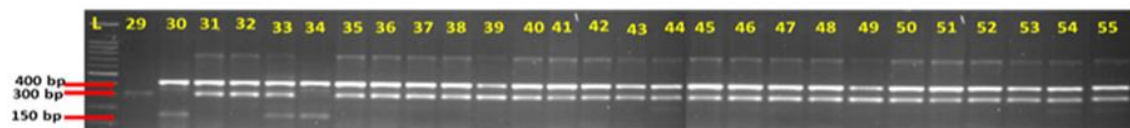
Fig. 1. Symptoms of bacterial leaf blight- (a) Resistant, (b) Susceptible, and (c) Leaf of a susceptible plant (Khan et al. 2014) [7]

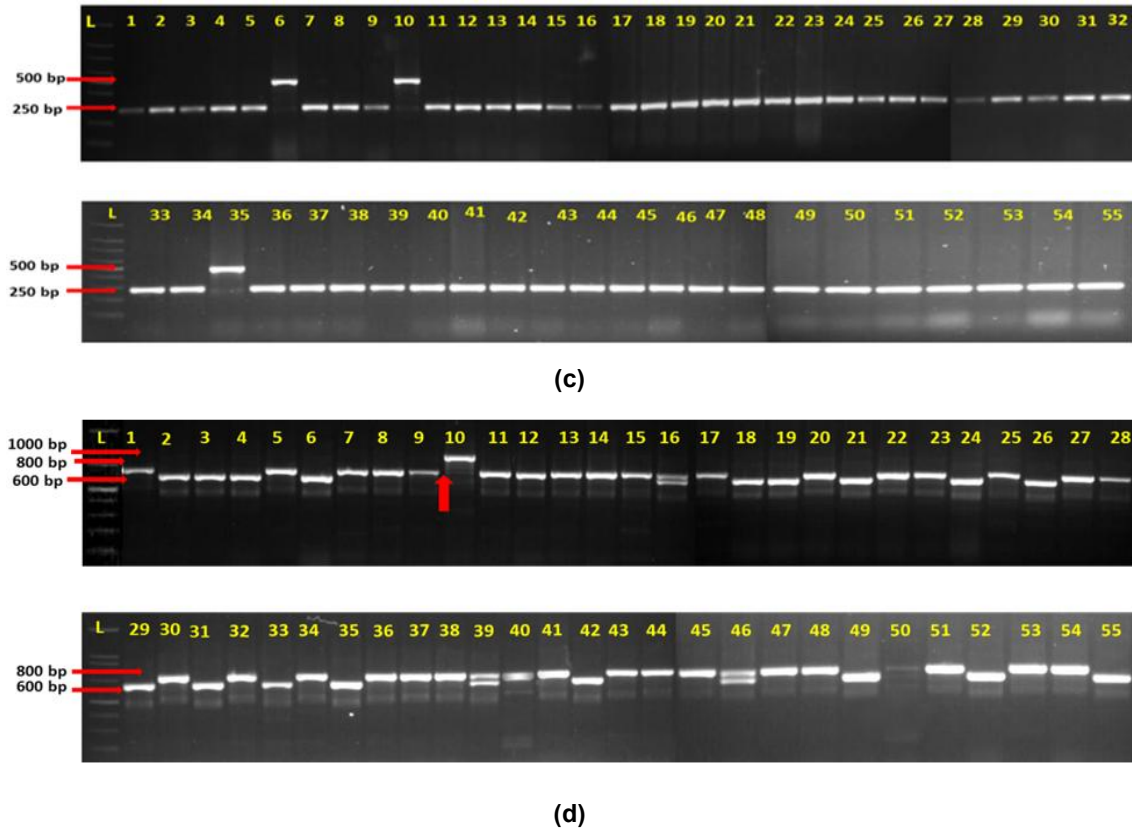


(a)



(b)





**Fig. 2. PCR amplification of markers linked to bacterial leaf blight resistance genes, *Xa4*, *xa5*, *xa13* and *Xa21* using primers (a) MP1+MP2, (b) *xa5* (Multiplex), (c) pAT248, and (d) *xa13* prom, respectively**

(L-ladder, 1-RAU 1484, 2- P. SUGANDH 5, 3-IR88966-39-1-4-4, 4-R. BHAGWATI, 5-IRBB5-9, 6- N.USAR DHAN3, 7-IRRI123, 8- HKR-08029, 9-AKSHYADHAN, 10-PRATIKHYA, 11-IR 06A177, 12- HIRANMAYEE, 13- IR06A196, 14- IRK4098SBR-1E, 15- HUA 565, 16- TRC 2013-1, 17-HHZ 25- DT9-Y1-Y1, 18- HHZ 14-SAL10-DT1-DT1, 19- HHZ 14-Y7-Y1-DT2, 20- IR64, 21-SABOUR ARDHJAL, 22- CRR 547-20-1-1, 23- IR 88964-24-2-1-4, 24- ZHONGHUA1, 25- IR 88968-2-1-1-2, 26- PPR78, 27- HHZ 9-SAL9-Y3-SUB1, 28- HHZ 2-Y3-Y1-Y1, 29- IR 91648-B-89-B-12-1, 30-IR 94314-20-2-1-B, 31- IR 87761-39-2-3-2, 32- PAU 3207, 33- CN 1646-1-9, 34- HHZ 5-DT8-DT1-Y1, 35- PAU 3220, 36- PR 35015-5-4, 37- IRO9N 142, 38- RYC 674, 39- IR 04A115, 40- CR 3622-7-3-1-1-1, 41- IR 06N120, 42- CR 2994-5-3-2-1-1, 43- SWARNA SUB1, 44- IR 1576-1698-2-556-1, 45- IR 07A140SBR-1, 46- R. KASTURI, 47- BPT 5204, 48- CR 3825-2-1-2-2-3, 49- IR 05A164, 50- IR96321-327-300-B-1-1, 51-PUSA 1638-07-129-2-63, 52-IR 88963-3-7-2-4, 53-MGD 1104, 54-HHZ 17-Y16-Y3-Y1, 55-R 1530-1546-1-418-1-1)

The present study also revealed that the genotype N. Usar Dhan 3 was having a combination of *xa5* and *xa13* gene and, that the only single genotype viz. Pratikhya carried all the 4 BB gene i.e. *Xa4*, *xa5*, *xa13* and *Xa21*. Kottapalli et al. [23] also reported *xa5*, *xa13* and *Xa21* as the best gene combination for the control of BB disease in rice.

#### 4. CONCLUSION

For sustainable management of the rice bacterial blight disease, stacking of genes conferring resistance to the disease is necessary. In the

hybrid rice technology, if the stacking could be done in parental genotypes, it could be easy to develop multiple good hybrids having resistance to BB. In the present study, 55 genotypes having restorable capacity to WA-CMS germplasm were screened for four most prevalent strains (*Xa4*, *xa5*, *xa13*, *Xa21*) of bacterial blight. Out of 55 genotypes, several were having one or more genes showing great value for breeders. The genotypes like N. Usar Dhan 3 and Pratikhya could further be utilized for transfer and stacking of two or more (even up to four) most important genes for resistance to bacterial blight through marker assisted breeding programme.

## ACKNOWLEDGEMENT

Authors acknowledge the Chairman, scientists and staff members of the Department of Plant Breeding and Genetics, Bihar Agricultural College, Sabour for their cooperation and motivation during the research work.

## COMPETING INTERESTS

Authors have declared that no competing interests exist.

## REFERENCES

1. Yugander A, Sundaram RM, Singh K, Ladhakshmi D, Rao LVS, Madhav MS, Badri J, Prasad MS, Laha GS. Incorporation of the novel bacterial blight resistance gene *Xa38* into the genetic background of elite rice variety Improved Samba Mahsuri. *Plos One*. 2018;13:5.
2. Ahmad R, Ahad K, Shah AU. Response of wheat to tillage and sowing techniques under arid condition. *Pakistan Journal of Agricultural Research*. 2017;30(2):162-172.
3. Bag MK, Yadav MK, Mukherjee AK. Changing disease scenario with special emphasis on false smut of rice. *SATSA Mukhapatra - Annual Technical*. 2017;21: 219-224.
4. Perumalsamy S, Bharani M, Sudha M, Nagarajan P, Arul L, Saraswathi R, Balasubramanian P, Ramalingam J. Functional marker-assisted selection for bacterial leaf blight resistance genes in rice (*Oryza sativa* L.). *Plant Breeding*. 2010; 129:400-406.
5. Ullah I, Jamil S, Iqbal MZ, Shaheen HL, Hasni SM, Jabeen S, Mehmood A, Akhter M. Detection of bacterial blight resistance genes in basmati rice landraces. *Genetics and Molecular Research*. 2012;11(3): 1960-1966.
6. Suh JP, Jeung JU, Noh TH, Cho YC, Park SH, Park HS, Shin MS, Kim CK, Jena KK. Development of breeding lines with three pyramided resistance genes that confer broad-spectrum bacterial blight resistance and their molecular analysis in rice. 2013; 6:5.
7. Khan MA, Naeem Md, Iqbal Md. Breeding approaches for bacterial leaf blight resistance in rice (*Oryza sativa* L.), current status and future directions. *European Journal of Plant Pathology*; 2014.
8. Singh S, Sidhu JS, Huang N, Vikal Y, Li Z, Brar DS, Dhaliwal HS, Khush GS. Pyramiding three bacterial blight resistance genes (*xa5*, *xa13* and *Xa21*) using marker-assisted selection into indica rice cultivar PR106. *Theory of Applied Genetics*. 2001; 102:1011-1015.
9. Naveed SA, Babar M, Arif A, Zafar Y, Sabar M, Ali I, Chragh M, Arif Md. Detection of bacterial blight resistant gene *xa5* using linked marker approaches. *African Journal of Biotechnology*. 2010; 9(24):3549-3554.
10. Arif Md, Jaffar Md, Babar Md, Sheikh MA, Kousar S, Arif A., Zafar Y. Identification of bacterial blight resistance genes *Xa4* in Pakistani rice germplasm using PCR. *African Journal of Biotechnology*. 2008; 7(5):541-545.
11. Pradhan SK, Nayak DK, Pandit E, Behera L, Anandan A, Mukherjee AK, Lenka S, Barik DP. Incorporation of bacterial blight resistance genes into lowland rice cultivar through marker assisted backcross breeding. *Phytopathology*. 2016;106:710-718.
12. Kumar V, Kumar P, Chattopadhyay T. A rapid and reproducible method for isolation of genomic DNA from a few crop plants suitable for polymerase chain reaction based on genotypic. *Journal of Applied and Natural Sciences*. 2017;9:1119-1122.
13. Ma BJ, Wang WM, Zhao B, Zhou YL. Studies of PCR marker for the rice bacterial blight resistance gene *Xa-4*. *Hereditas*. 1999;21:9-12.
14. Suh JP, Cho YC, Won YJ, Ahn EK, Baek MK, Kim MK, Kim BK, Jena KK. Development of resistant gene-pyramided japonica rice for multiple biotic stresses using molecular marker-assisted selection. *Plant Breeding and Biotechnology*. 2015; 3(4):333-345.
15. Sundaram RM, Vishnupriya MR, Biradar SK, Laha GS, Reddy GA, Rani NS, Sarma NP, Sonti RV. Marker assisted introgression of bacterial blight resistance in Samba Mahsuri, an elite indica rice variety Raman. *Euphytica*. 2008;160:411-422.
16. Sinha S, Kumar A, Satyendra Kumar M, Singh SP, Singh PK. Screening of rice genotypes for abiotic and biotic stresses using molecular markers. *Journal of Pharmacognosy and Phytochemistry*. 2018;7(2):2111-2115.



17. Swathi G, Durga Rani CH, Oddin VJ, Kumar NAP, Vanisri S, Madhav MS, Sundaram RM, Kumar NR, Laha MS, Raju SK, Bhuvaneshwari V, Satyanarayana PV. Marker-assisted breeding for resistance to bacterial leaf blight in popular fine grain variety Jagitial Sannalu. *International Journal of Current Research*. 2015;7:10.
18. Singh AK, Dharmraj E, Nayak R, Singh PK, Singh NK. Identification of bacterial leaf blight resistance genes in wild rice of eastern India. *Turkish Journal of Botany*. 2015;39:1060-1066.
19. Arunakumari K, Durgarani CV, Satturu V, Sarikonda KR, Chittoor PDR, Vutukuri B, Laha GS, Nelli APK, Gattu S, Jamal M, Prasadbabu A, Hajira S, Sundaram RM. Marker-assisted pyramiding of genes conferring resistance against bacterial blight and blast diseases into Indian rice variety MTU1010. *Rice Science*. 2016; 23(6):306-316.
20. Dash AK, Rao RN, Rao GJN, Verma RL, Katara JL, Mukherjee AK, Singh ON, Bagchi TB. Phenotypic and marker-assisted genetic enhancement of parental lines of rajalaxmi, an elite rice hybrid. *Frontiers of Plant Science*. 2016;7:1005
21. Hajira SK, Sundaram RM, Laha GS, Yugander A, Balachandran SM, Viraktamath BC, Sujatha K, Balachiranjeevi CH, Pranathi K, Anila M, Bhaskar S, Abhilash V, Mahadevaswamy HK, Kousik M, Kumar TD, Harika G, Rekha G. A single-tube, functional marker-based multiplex PCR assay for simultaneous detection of major bacterial blight resistance genes *Xa21*, *xa13* and *xa5* in Rice. *Rice Science*. 2016;23(3):144-151.
22. Bharania M, Nagarajana P, Rabindranb R, Saraswathic R, Balasubramaniana P, Ramalingam J. Bacterial leaf blight resistance genes (*Xa21*, *xa13* and *xa5*) pyramiding through molecular marker assisted selection into rice cultivars. *Archives of Phytopathology and Plant Protection*. 2010;43(10):1032-1043.
23. Kottapalli KR, Narasu ML, Jena KK. Effective strategy for pyramiding three bacterial blight resistance genes into fine grain rice cultivar, Samba Mahsuri, using sequence tagged site markers. *Biotechnology Letters*. 2010;32:989-996.
24. Deng ZX, Peng ZH, Yao CR, Yun ZJ, Hua CS, Yong CL. Breeding of R8012, a rice restorer line resistant to blast and bacterial blight through marker-assisted selection. *Rice Science*. 2012;19:1.
25. Luo Y, Sangha JS, Wang S, Li Z, Yang J, Yin Z. Marker-assisted breeding of *Xa4*, *Xa21* and *Xa27* in the restorer lines of hybrid rice for broad-spectrum and enhanced disease resistance to bacterial blight. *Molecular Breeding*. 2012;30:1601-1610.
26. Xu J, Jiang J, Dong X, Ali J, Mou T. Introgression of bacterial blight (BB) resistance genes *Xa7* and *Xa21* into popular restorer line and their hybrids by molecular marker-assisted backcross (MABC) selection scheme. *African Journal of Biotechnology*. 2012;11(33): 8225-8233.
27. Magar MM, Durga Rani CHV, Anuradha G. Marker assisted selection for bacterial leaf blight resistance in segregating populations of Cottondora Sannalu. *International Journal of Applied Sciences and Biotechnology*. 2014;2(3):229-237.
28. Pradhan SK, Nayak DK, Mohanty S, Behera L, Barik SR, Pandita E. Pyramiding of three bacterial blight resistance genes for broad-spectrum resistance in deep water rice variety, Jalmagna. *Rice*. 2015;8: 19.

© 2020 Sinha et al.; This is an Open Access article distributed under the terms of the Creative Commons Attribution License (<http://creativecommons.org/licenses/by/4.0>), which permits unrestricted use, distribution, and reproduction in any medium, provided the original work is properly cited.

*Peer-review history:*  
The peer review history for this paper can be accessed here:  
<http://www.sdiarticle4.com/review-history/56535>